



The Disproportionate Impact of Substance Use on Native Peoples

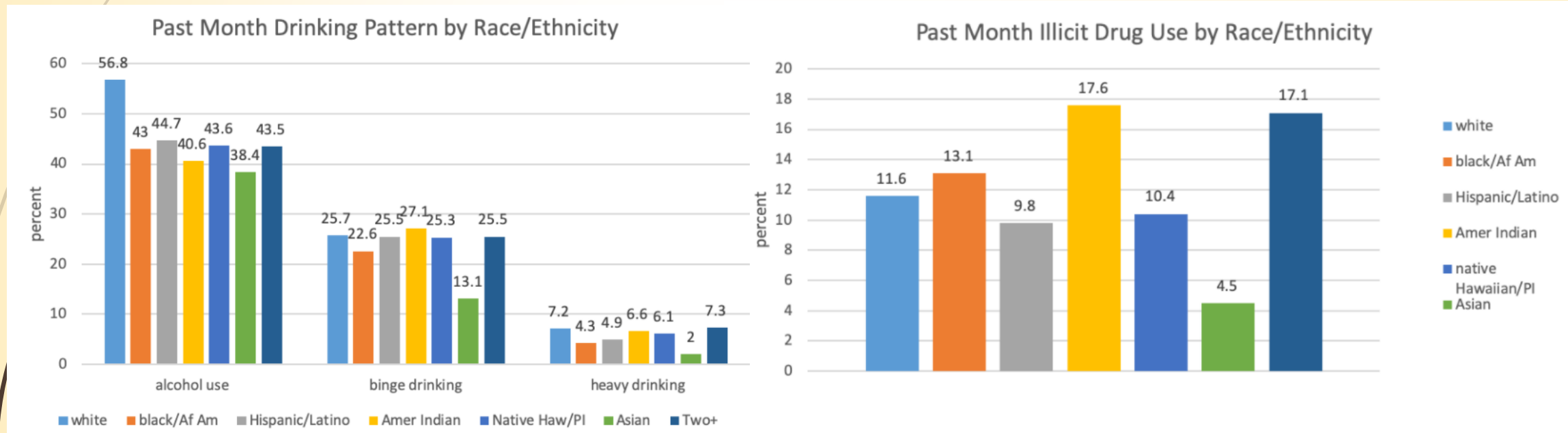
John Godfrey, MC, LPC

Nancy Mangieri, DNP, MSN



Baseline Data

- Native Americans have the highest rates of alcohol, marijuana, cocaine, inhalant, and hallucinogen use disorders than any other ethnic group.



2017 National Survey on Drug Use and Health (NSDUH)

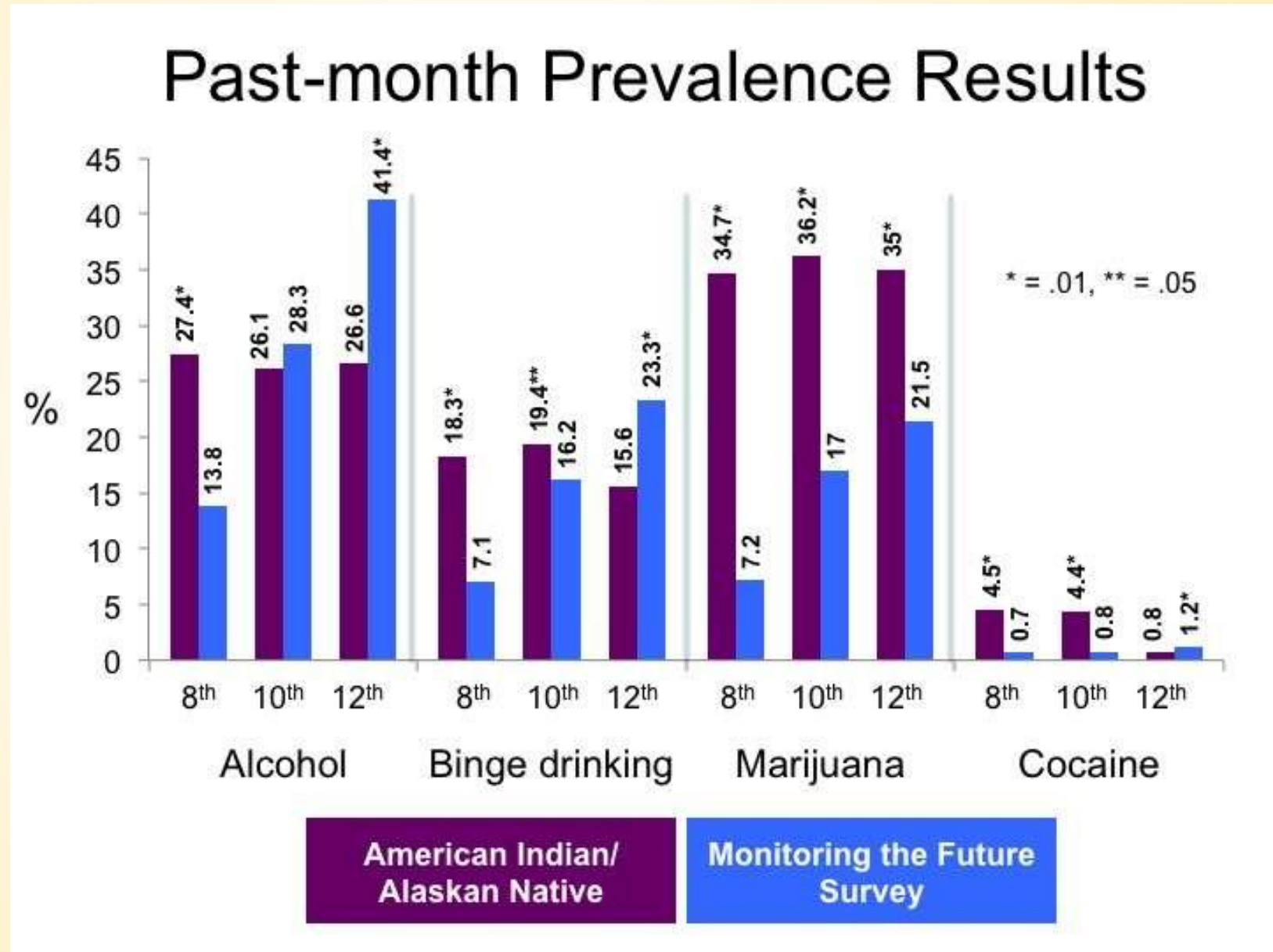


Baseline Data - Youth

- ▶ A 2017 NSDUH study found that 1 in 5 Native American young adults aged 18 – 25 have a classified substance use disorder (11% with illicit drugs and 10% with alcohol)
- ▶ According to a survey conducted from 2009 to 2012 from 33 schools on or near a reservation, Native youth tend to start younger and have a higher overall percentage of substance use than their non-native peers.



Results from the American Drug and Alcohol Survey (2009 – 2012)





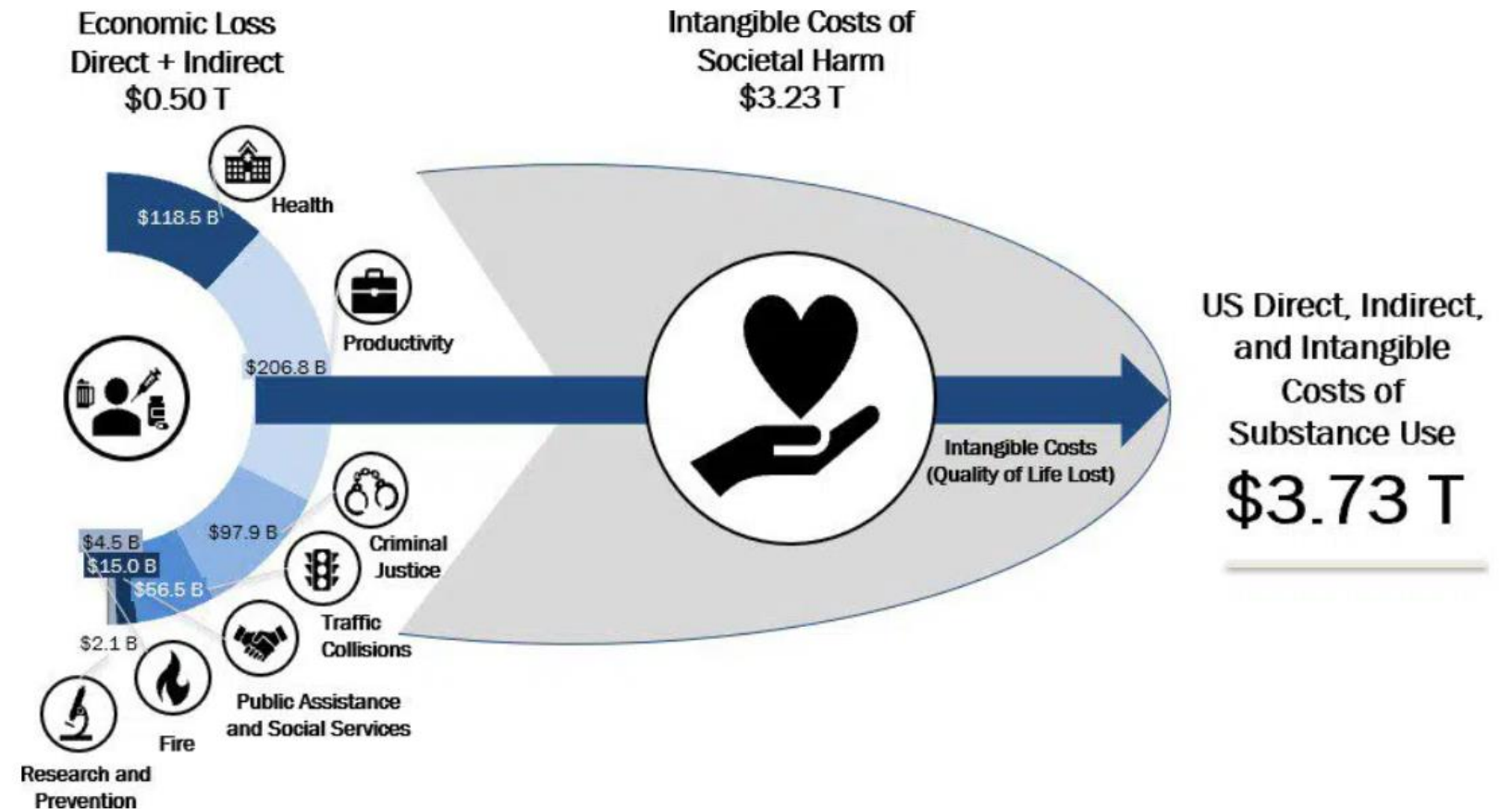
Social and Mental Health Impacts

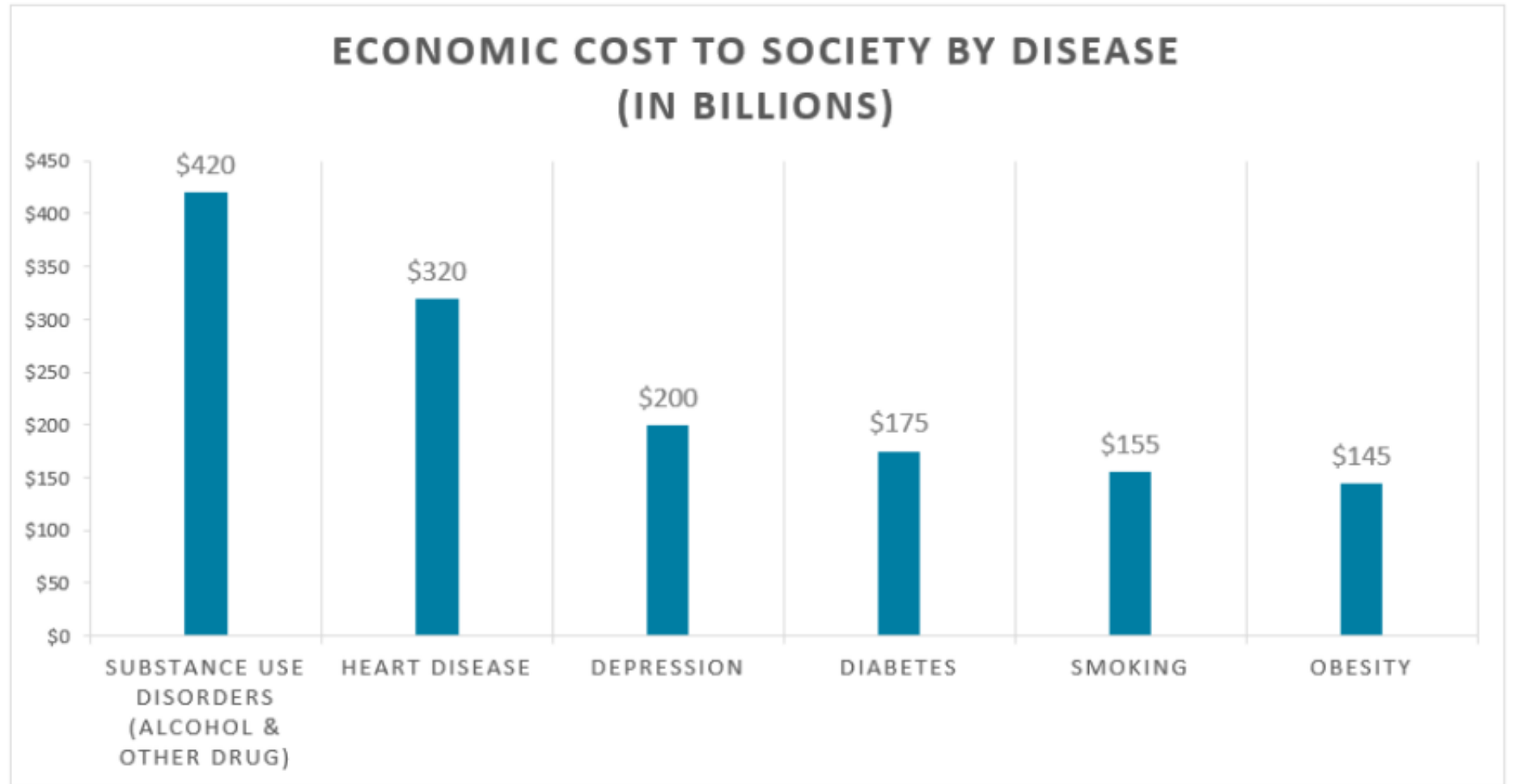
- Increase in Isolation, Anxiety, Depression and Suicide
- Increase in Risky Behavior (victimization, criminal involvement, DUI, sexual behavior, etc.)
- Negative Impact on the Family and Relationships
- Negative Impact on Role Performance (Employment, School, Parental Responsibilities, etc.)
- Negative Impact on Personal Finances
- Housing Instability
- Increase in trauma that feeds the Generational Cycle of Addiction



Economic Impacts

Economic Cost of Substance Abuse Disorder in the United States (2019), Summary View

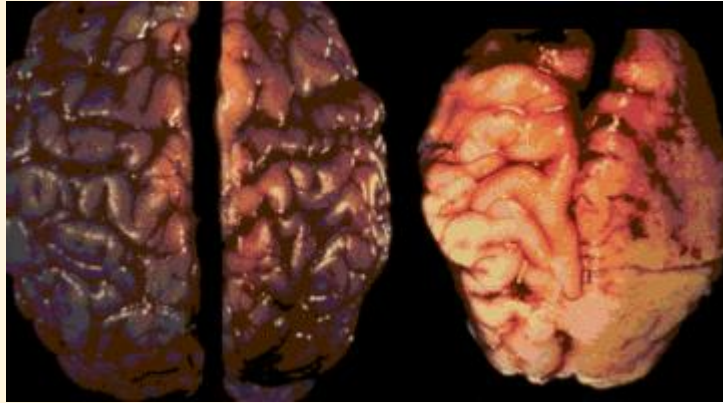




SOURCE: Bouchery, Harwood, Sacks, Simon, & Brewer, 2011; Mrazek, Hornberger, Altar, & Degtiar, 2014; USDOJ, 2011

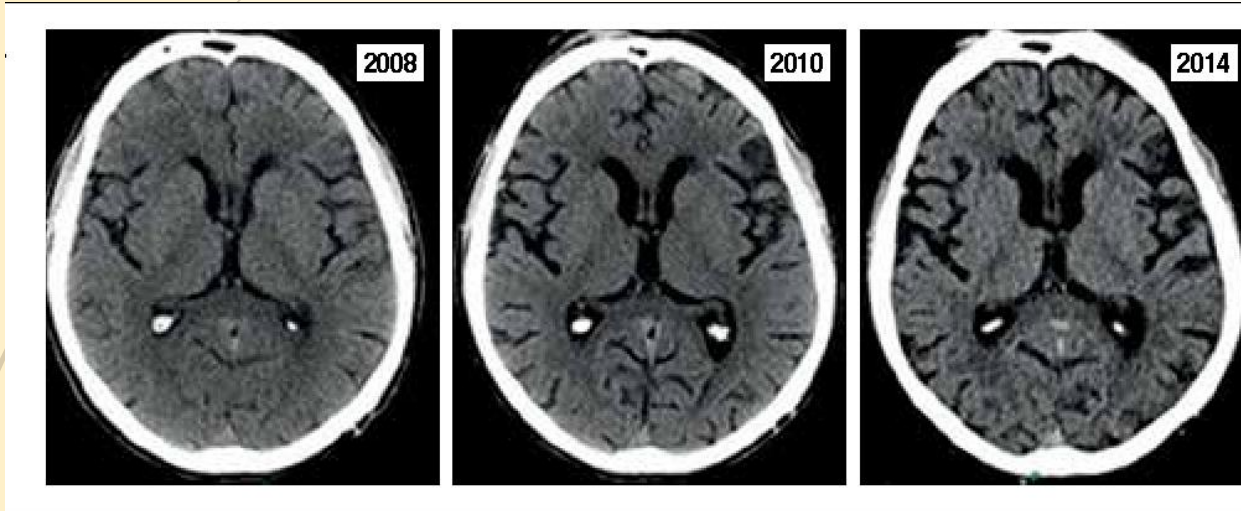


Health Impacts





Health Impacts - Alcohol



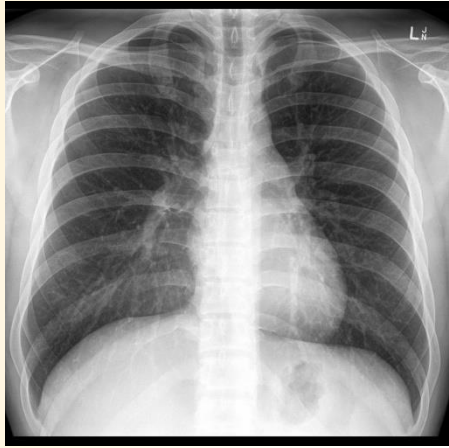
➤ Wernicke-Korsakoff Syndrome

➤ Stroke





Health Impacts - Alcohol

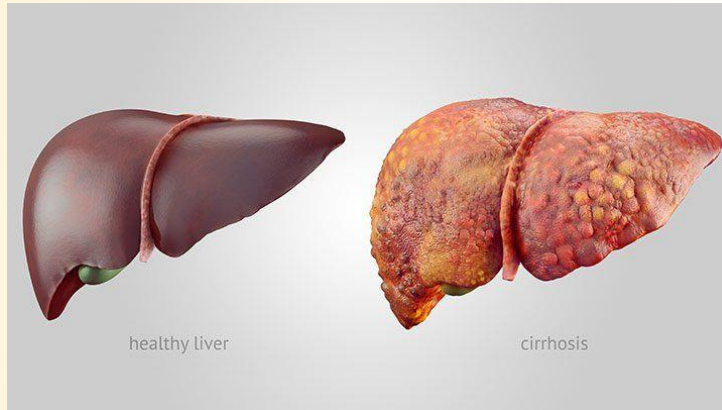


➤ Cardiomyopathy





Health Impacts - Alcohol



- Ascites
- Gynecomastia
- And...





Health Impacts - Alcohol

➤ Testicular atrophy





Health Impacts - Fentanyl



- Synthetic opioid (made in a lab)
- 50-100 times more potent than morphine
- Illegal forms may come in powder, dropped onto blotter paper, put in eye droppers and nasal sprays, or made into pills



Health Impacts - Fentanyl



<https://nida.nih.gov/publications/drugfacts/fentanyl>



Health Impacts - Methamphetamine



- White, bitter-tasting powder or a pill.
- Crystal methamphetamine looks like glass fragments or shiny, bluish-white rocks.
- Stimulant, Dopamine



Health Impacts - Methamphetamine

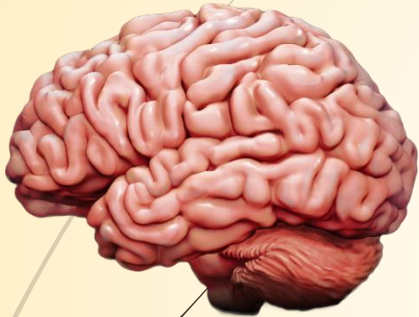


- Violent behavior
- Paranoia, Hallucinations
- HIV, Hepatitis B and C
- Memory, Learning, Emotion

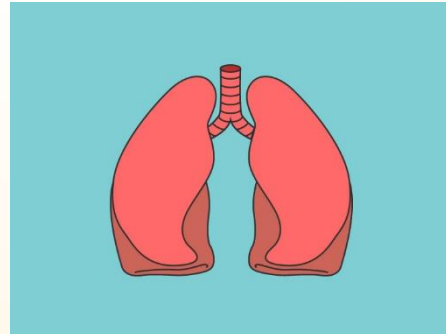




Health Impacts - Marijuana



- IQ dropped in a developing brain and didn't return as an adult, even after stopping marijuana use.



<https://nida.nih.gov/publications/drugfacts/cannabis-marijuana>





Public Health what we know!

Substance use impacts Native Americans disproportionately and threatens the health, vitality and future productivity of next generations.



What is the public health mission?

- ▶ Detecting and responding to new and emerging health threats
- ▶ Tackling the biggest health problems causing death and disability for Americans
- ▶ Putting **science** and advanced technology into action to prevent disease
- ▶ Promoting healthy and safe behaviors, communities and environment



Why do tribes need public health?

As sovereign nations, tribes have the inherent authority to undertake measures to prepare and manage public health infectious disease threats in the manner most appropriate for their communities.



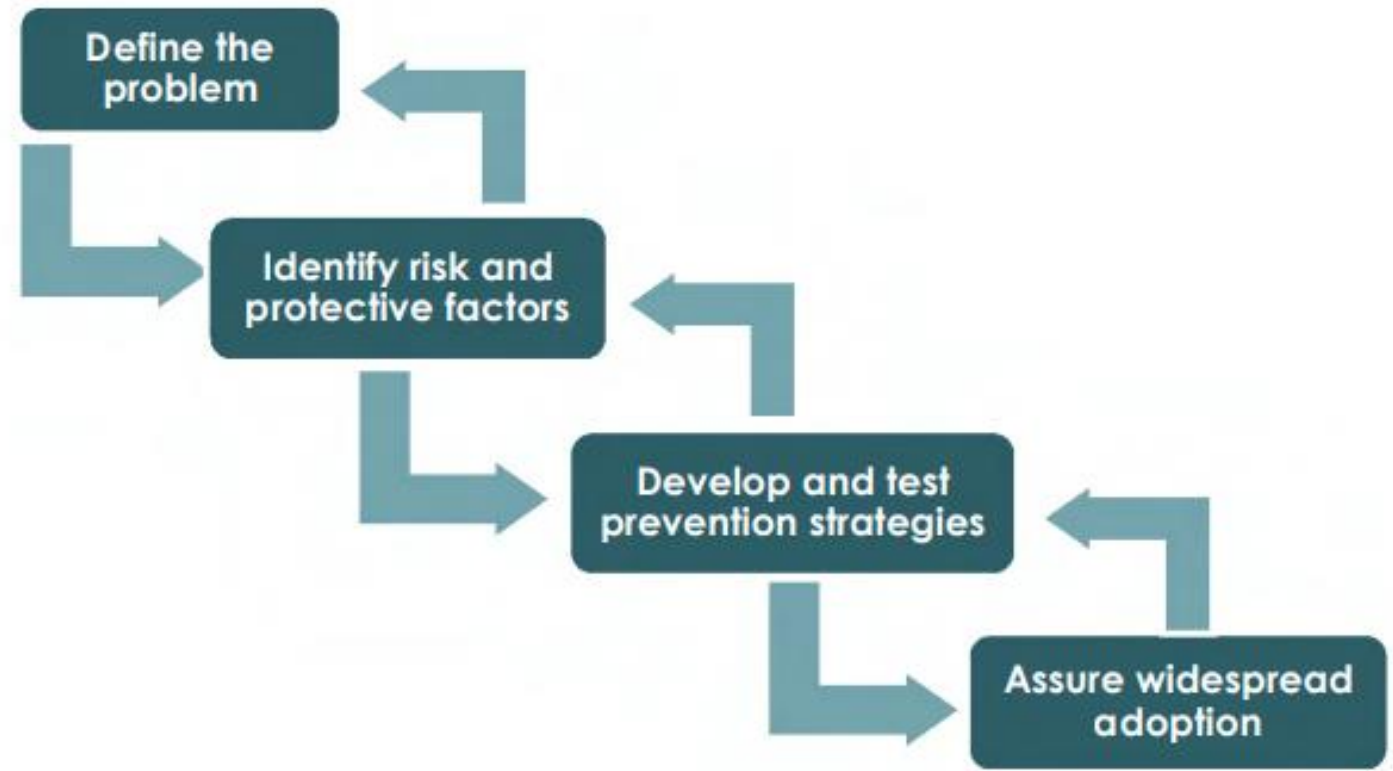
Public Health Model in Tribal Communities

- The Centers for Disease Control state, “the focus of public health is on the health, safety, and well-being of entire populations.
- A unique aspect of Public Health is that it strives to provide the maximum benefit for the largest number of people.”
- The public health approach to **prevention** is based on the Public Health Model.
- There are multiple steps in the public health approach, with each step informing the next.
- Many people, organizations, and systems are involved at each step along the way.



Public Health Model in Tribal Communities

Figure 1. Public Health Approach





Questions

