

## CDD/EPNR

10005 E. Osborn Rd.  
Two Waters Bldg. B-3rd Floor  
Scottsdale, AZ 85256



*The Environmental Protection and Natural Resources Division (EPNR) is a Division of the Community Development Department (CDD). This Division was established to enhance the quality of life within the Salt River Pima-Maricopa Indian Community by protecting and preserving the land, eco-systems, wildlife, history, and natural resources of the Community.*

**EPNR CALL LINE 480-362-7500**

Let us know what you want to learn about in the next Enviro-Kidz issue.  
Please send your questions or comments to:

[lily.bermejo@srpmic-nsn.gov](mailto:lily.bermejo@srpmic-nsn.gov)  
or  
Contact me at 480-362-2631



**PROTECT, RESPECT AND CARE FOR THE EARTH!**



## Volume 1, Issue 2 SRPMIC Enviro-Kidz

### I think therefore, I'm Green!



DO YOU THINK GREEN?  
REDUCE, REUSE, RECYCLE!!!

**THINK GREEN!**

REMEMBER TO RECYCLE PAPER, MAGAZINES, AND NEWSPAPERS AFTER YOU ARE DONE USING THEM.

REMEMBER TO SEPARATE YOUR SODA CANS, WATER, AND JUICE BOTTLES, AND PLACE THEM IN A RECYCLE BIN AFTER USING THEM.

REMEMBER TO SEPARATE CARDBOARD BOXES FROM BOUGHT PRODUCTS AND PLACE THEM IN THE RECYCLING BIN.

**BE GREEN!**

### Where does my trash go?

EVER WONDER WHERE YOUR TRASH GOES? HAVE YOU NOTICED IT GOES INTO A BLACK BIN OUTSIDE YOUR HOUSE? FROM THERE IT IS PICKED UP BY A TRUCK AND TAKEN TO A FACILITY CALLED A LANDFILL. A LANDFILL IS A DESIGNATED AND MANAGED FACILITY THAT COMPACTS THE TRASH AND BURIES IT IN A WAY THAT IS SAFE FOR THE ENVIRONMENT.



### ENVIRO-KIDZ

Page 1

#### What is in my Newsletter?

- I THINK GREEN!
- WHERE DOES MY TRASH GO?
- HELPING NATURE
- ENVIRO PUZZLE AND MAZE
- COLORING

#### ENVIRO-KIDZ TIPS:

**\*DO NOT THROW FOOD WRAPPERS, CANS OR ANY TRASH IN THE STREETS.**

**\*IF YOU SEE SOMEONE THROW TRASH ON THE FLOOR AT SCHOOL OR AT HOME, PICK IT UP AND PUT IT IN A TRASH CAN.**

# Helping Nature and the Environment!

- 1.) Respect all animals and plants.
- 2.) Plant a tree.
- 3.) Reduce your waste and recycle items.
- 4.) Encourage your parents to carpool.
- 5.) Conserve water. Turn off the faucet when it is not in use.
- 6.) Conserve energy. Turn off the lights when not in the room or unplug appliances when not in used.

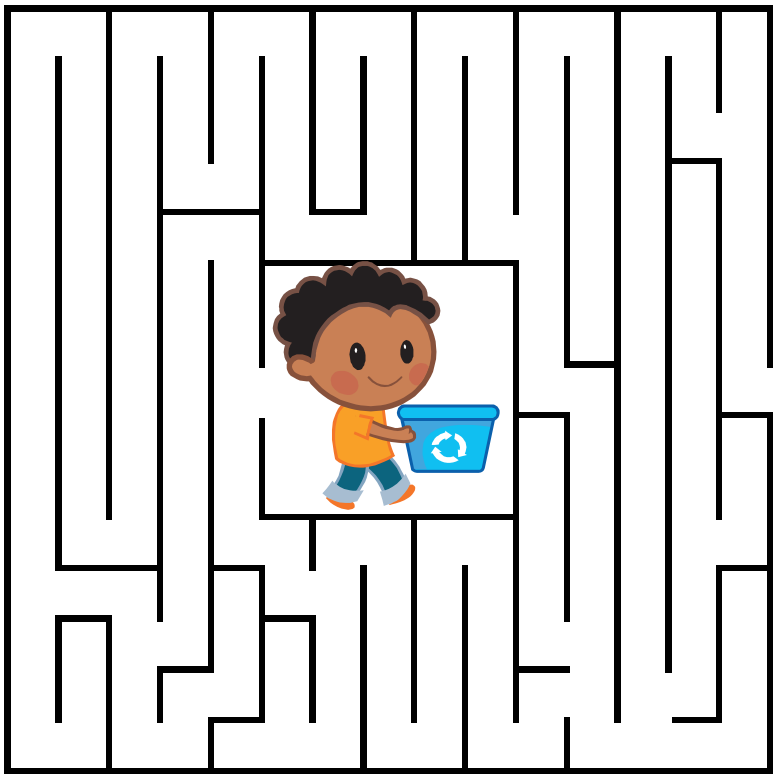


## Enviro-puzzlemania

FIND THE WORDS IN THE WORD SEARCH PUZZLE:

GREEN	R	E	T	S	A	W	G	A	Q	R
HAZARDOUS	H	E	D	V	F	S	R	B	E	Z
SOIL	F	Y	D	I	K	N	O	U	B	N
REUSE	O	O	X	U	P	Q	S	X	P	Y
WATER	R	R	N	P	C	E	H	R	V	U
AIR	Q	E	V	K	U	E	I	Z	E	G
REDUCE	R	F	T	C	A	A	P	H	L	R
WASTE	U	M	Z	A	E	F	G	Q	I	E
	I	L	N	H	W	L	D	O	O	E
	H	A	Z	A	R	D	O	U	S	N

# Help the boy find the recycling items!



## COLOR AND WRITE SOMETHING ABOUT THE PICTURE

